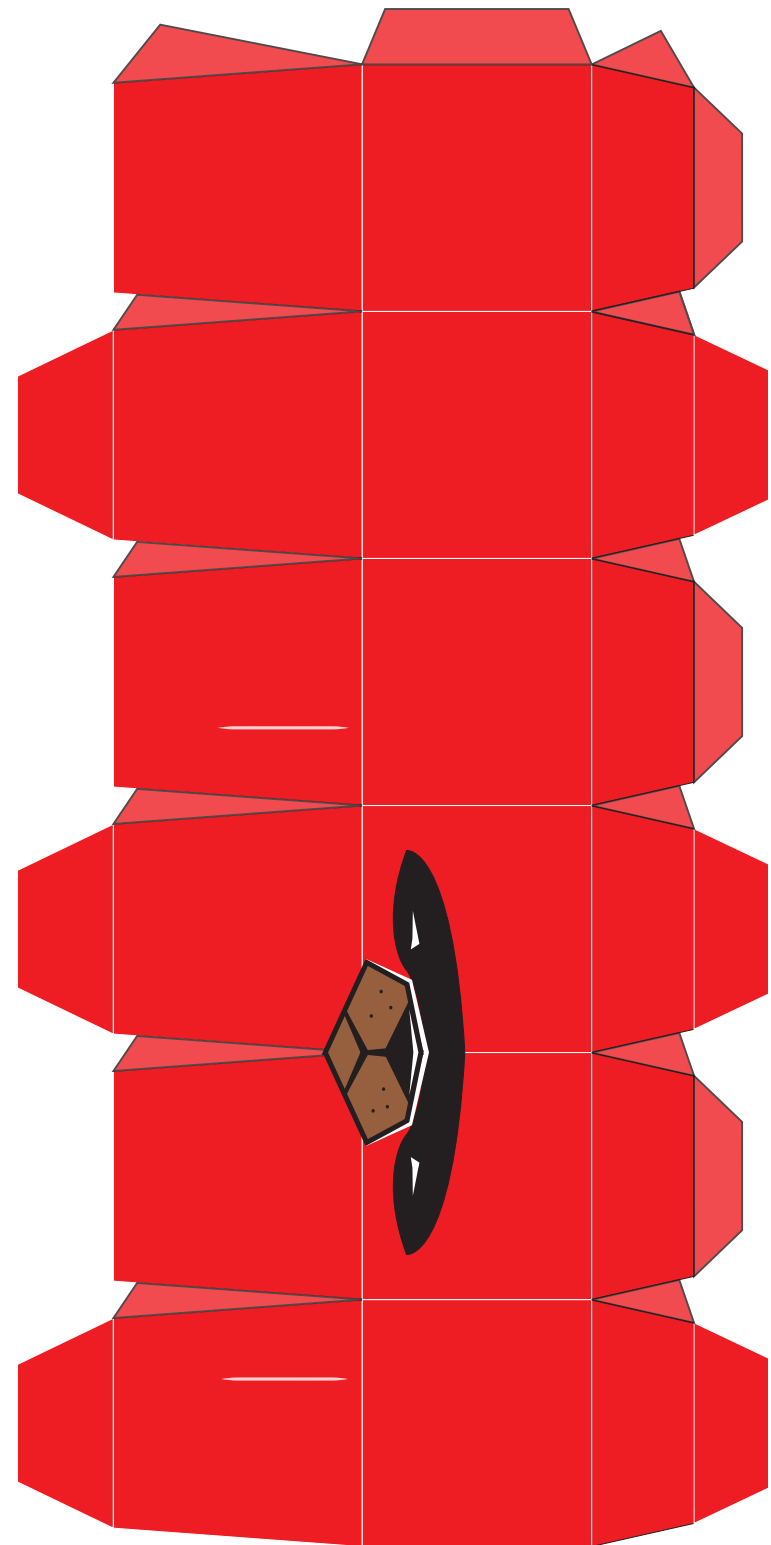
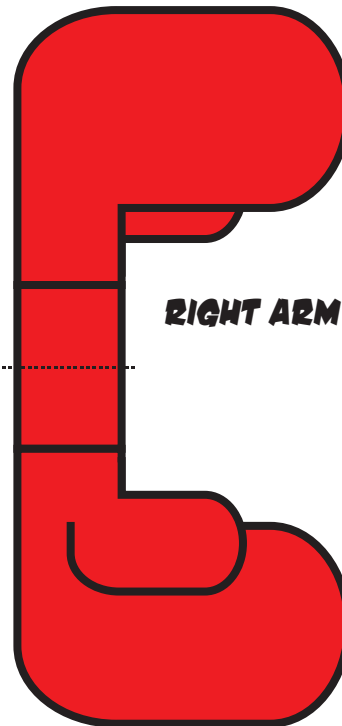
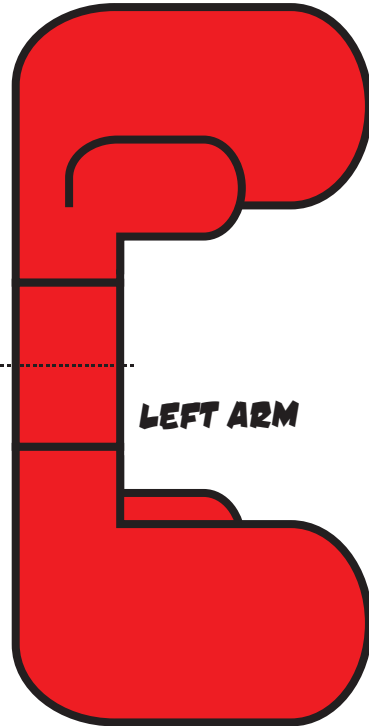
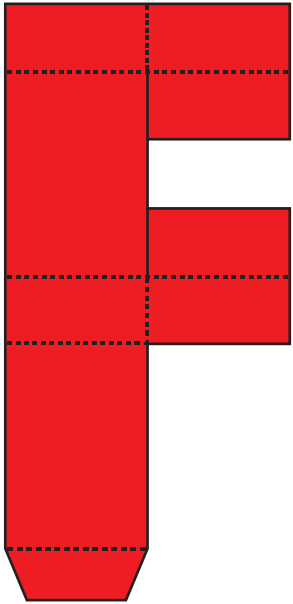
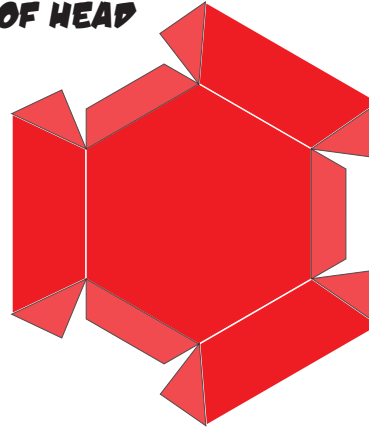


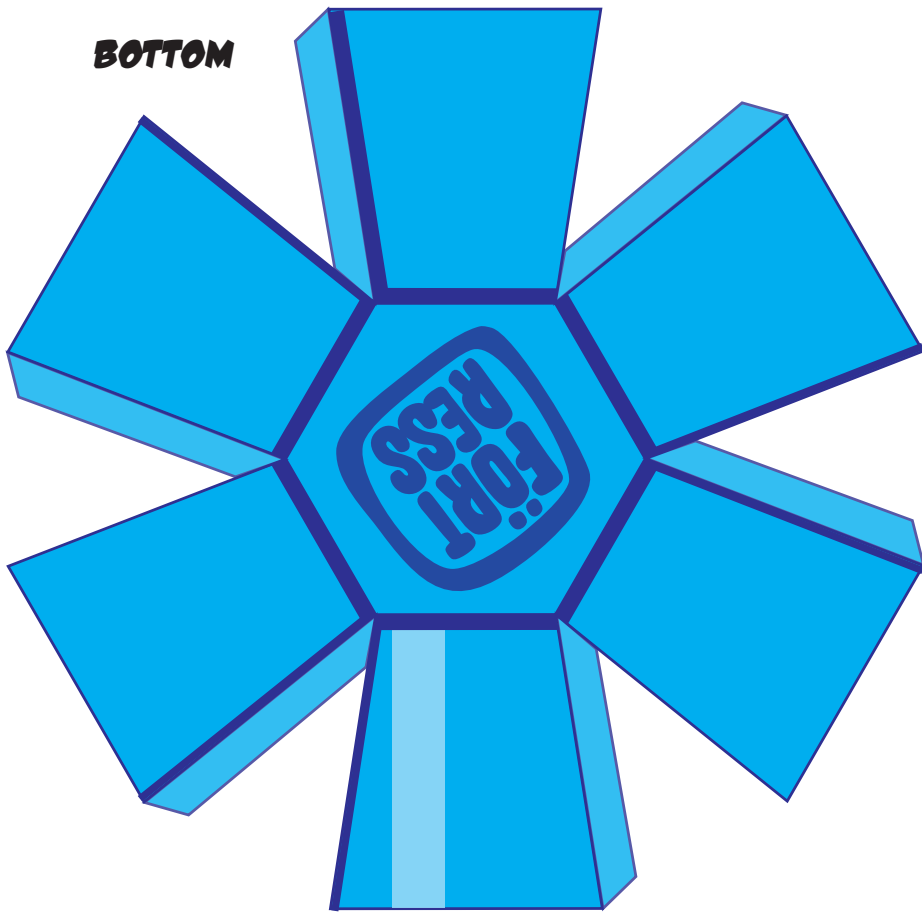
INSTRUCTIONS BODY:

1. SCORE ALL LINES.
2. CUT OUT WHITE LINE IN BODY FOR THE ARMS.
3. CUT OUT BODY AND TOP OF HEAD.
4. FOLD THE LINES AND GLUE BODY TOGETHER - BEFORE GLUEING OUTER TAB ATTACH TOP OF THE HEAD.
5. CUT OUT AND FOLD OVER ARMS, THEN GLUE TOGETHER.
6. STICK ARMS IN SIDE OF BODY.
- (IF NEEDED, SCORE AT THE EDGE OF THE WHITE PART OF ARMS, CUT AT THIN DOTTED LINE AND GLUE TO INNER SIDE OF BODY)
7. BUILD THE "F" BY FOLDING AND GLUEING IT TOGETHER TO A SQUARE, IT LATER GOES BETWEEN THE HELMET AND THE HEAD.

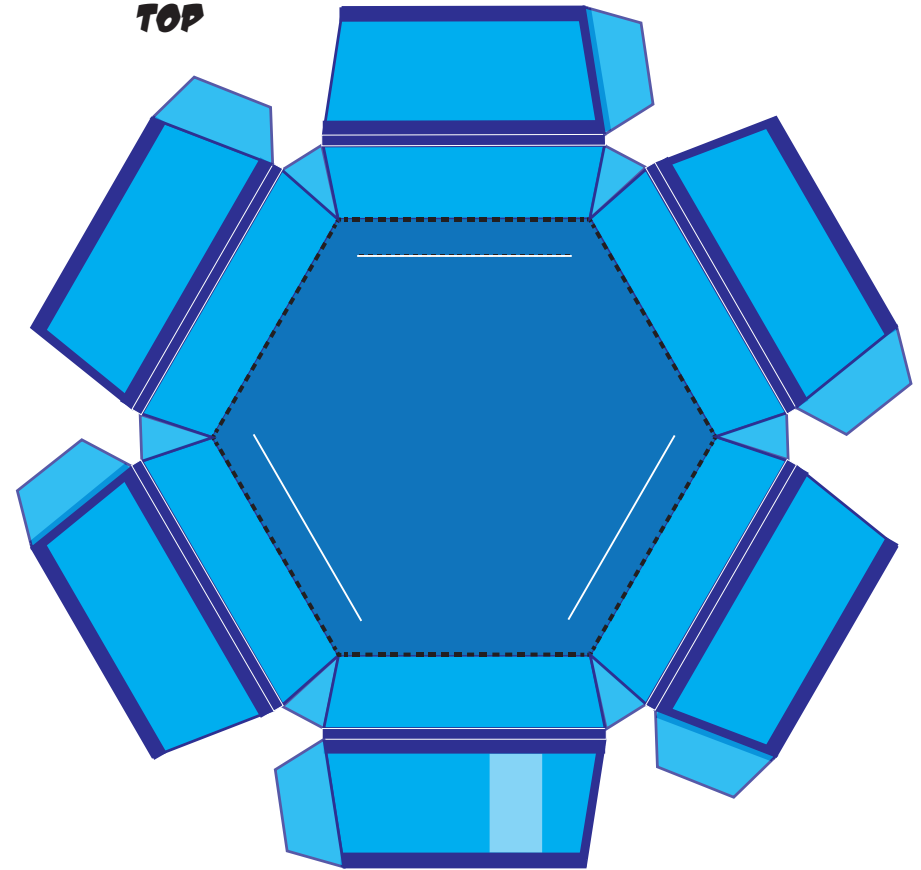
TOP OF HEAD



BOTTOM



TOP



INSTRUCTIONS POT:

- 1. SCORE ALL LINES (NOTE: THERE ARE TWO SCORE-LINES ON TOP PART THAT BUILD THE RIM AND GO OVER THE BOTTOM PART).**
- 2. CUT OUT, FOLD AND GLUE BOTTOM PART OF POT.**
- 3. CUT OUT TOP PART OF POT, CUT WHITE LINES - CACTUS GOES IN THERE.**
- 4. FOLD THE LINES:**
 - INNER PART IS A VALLEY-FOLD.
 - FOLD OVER THE RIM.
- 5. GLUE TOGETHER INNER PART (INWARDS).**
- 6. START GLUEING OUTER PART FOLDED OVER.**
- 7. AFTER TWO OR THREE PARTS ARE GLUED TOGETHER, PUT OVER BOTTOM AND CONTINUE GLUEING THE REST. NOW IT WILL FIT LIKE A GLOVE!**
- 8. STICK CACTUS INTO POT.**
- 9. AND MOST IMPORTANT: NO WATERING NECESSARY!**



INSTRUCTIONS HELMET:

1. SCORE ALL LINES.
2. CUT OUT VISOR, HELMET AND TOP OF HELMET.
4. FOLD DARK PART OF VISOR OVER AND GLUE TO THE BACK, THEN GLUE VISOR TO INSIDE OF HELMET FRONT.
5. FOLD THE LINES AND GLUE HELMET TOGETHER - BEFORE GLUEING OUTER TAB ATTACH TOP OF THE HELMET.
6. STICK HELMET ON TOP OF HEAD, MAKE SURE TO PUT THE SQUARE IN BETWEEN HELMET AND HEAD.

